

## **Breed Development**

The Dogo Argentino originated in the province of Cordoba, in the central region of the Republic of Argentina. Its creator was Dr. Antonio Nores Martinez, a doctor and member of a family with a deep sense of tradition. In 1928, his passion for dogs led him to set the basis and a standard for a new dog breed, which he named Dogo Argentino.

His work was based upon the methodical crossbreeding of several purebreds with the Old Fighting Dog of Cordoba, a dog which was very strong and vigorous. To this dog he added, Great Dane, Pointer, Bull Terrier, Boxer, Bulldog, Pyrenean Mastiff, Irish Wolfhound and Spanish Mastiff. Through different generations, Dr. Nores Martinez accomplished his purpose, producing the first family of Dogo Argentino.

Its strength, tenacity, sharp sense of smell and bravery make it the best dog among those used for hunting wild boars, peccaries, pumas, and other predators that can be found in the vast and heterogeneous areas of the Argentine territory.

Its harmony, balance and athleticism are ideal for enduring long trips in any weather conditions and then fighting fiercely with the pursued prey.

In 1964 the breed was recognized by the FCA (Federación Cinologica Argentina) which opened the studbooks to initiate registry. In 1973 the breed was accepted by FCI as the first and only Argentine breed, thanks to the great passion, work and effort of Dr. Augustin Nores Martinez, its late creator's brother, and successor.

The breed received full AKC Recognition in January 2020.

[www.dogousa.org](http://www.dogousa.org)

[daca@dogousa.org](mailto:daca@dogousa.org)

 [@dogousa](https://www.facebook.com/dogousa)

 [@dacadogos](https://www.instagram.com/dacadogos)

# **Dogo Argentino Club of America**



**Official AKC Parent Club of the  
Dogo Argentino**



Founded 1985

[www.dogousa.org](http://www.dogousa.org)

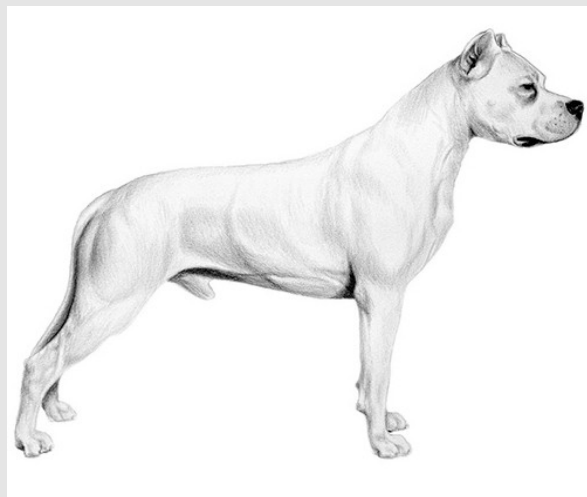
## General Appearance

The ideal Dogo Argentino is a study in harmony. He is large, powerful, and athletic. His strong head is supported by a thick, but elegant neck that connects to a balanced body, which is sustained by straight, substantial forelegs and very muscular, medium-angulated hindquarters.

The Dogo Argentino gives the impression of **explosive** power and **energy**. Developed to find, chase and catch dangerous game the Dogo must have a good nose, great lung capacity, and a powerful, yet agile, muscular build.

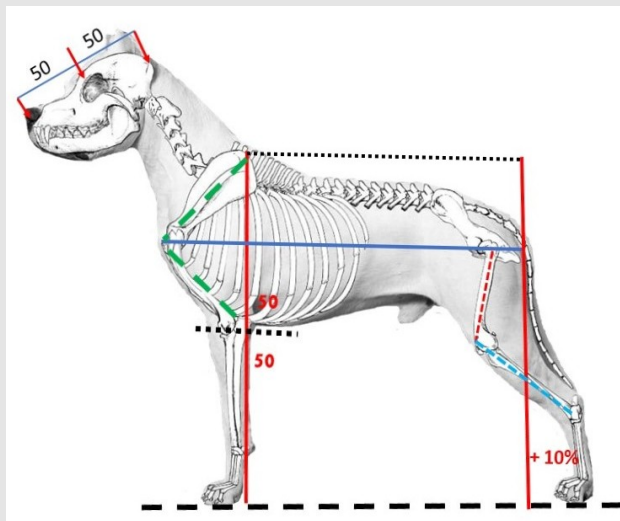
His expression is alert and intelligent, with a marked hardness. The Dogo Argentino's head gives him his unique stamp. These proportions were designed to give the Dogo a sufficiently large mouth and powerful bite for holding prey. Great value is placed upon this equal length's ratio of 1:1 and a large mouth.

The general appearance and overall balance of the Dogo Argentino, with utmost consideration given to **TYPE**, is a first priority.

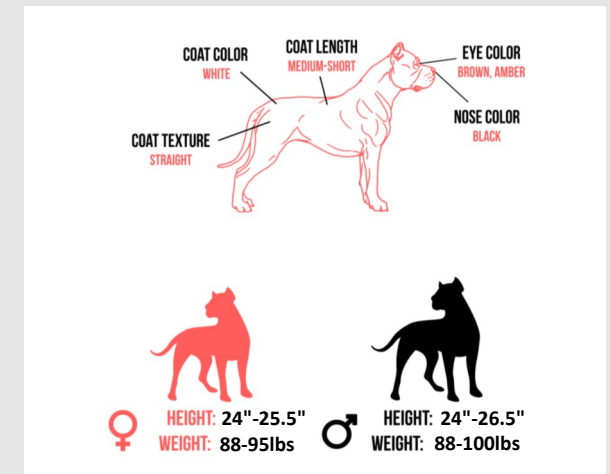


## Key Points to Judging the Dogo Argentino

- ◆ Study in Harmony -Large, Powerful, Athletic
- ◆ Head/Muzzle - Strong with well defined masseter muscles. 1:1 Ratio (Measured from nose to brow bone:brow bone to occiput).
- ◆ Tight fitting lips. Never pendulous.
- ◆ Eyes - Medium sized, almond shaped, dark or hazelnut in color, set wide apart.
- ◆ A look of Marked Hardness
- ◆ Body - Slightly off-square
- ◆ Topline - Highest at the withers, slightly sloping to the croup
- ◆ Chest - Broad and deep, depth of the chest represents 50% of the height at the withers.
- ◆ Forequarters - Straight, shoulders are laid back, moderately angulated hindquarters.
- ◆ Short tight feet.



- ◆ Pigment – Nose and lips are preferably pigmented in black. Black pigmented **skin** anywhere on the dog is acceptable
- ◆ Entirely white. The only tolerable spots are one black or dark-colored patch on the skull but which can also be located on one ear or around one eye or very small dark spots on the ears. The size of the spot must be in proportion to the size of the head, **not exceeding 10 percent of the latter** .



## Disqualifications

- ◆ Height above or below the limits established in the standard
- ◆ Blue eye(s). Any blue color in the eye(s).
- ◆ Nose any color other than black.
- ◆ Overshot or undershot mouth.
- ◆ Top lip extending below the bottom jaw.
- ◆ Long hair.
- ◆ More than one spot on the head (with the exception of small spots on the ears.)
- ◆ A black spot anywhere other than on the head.